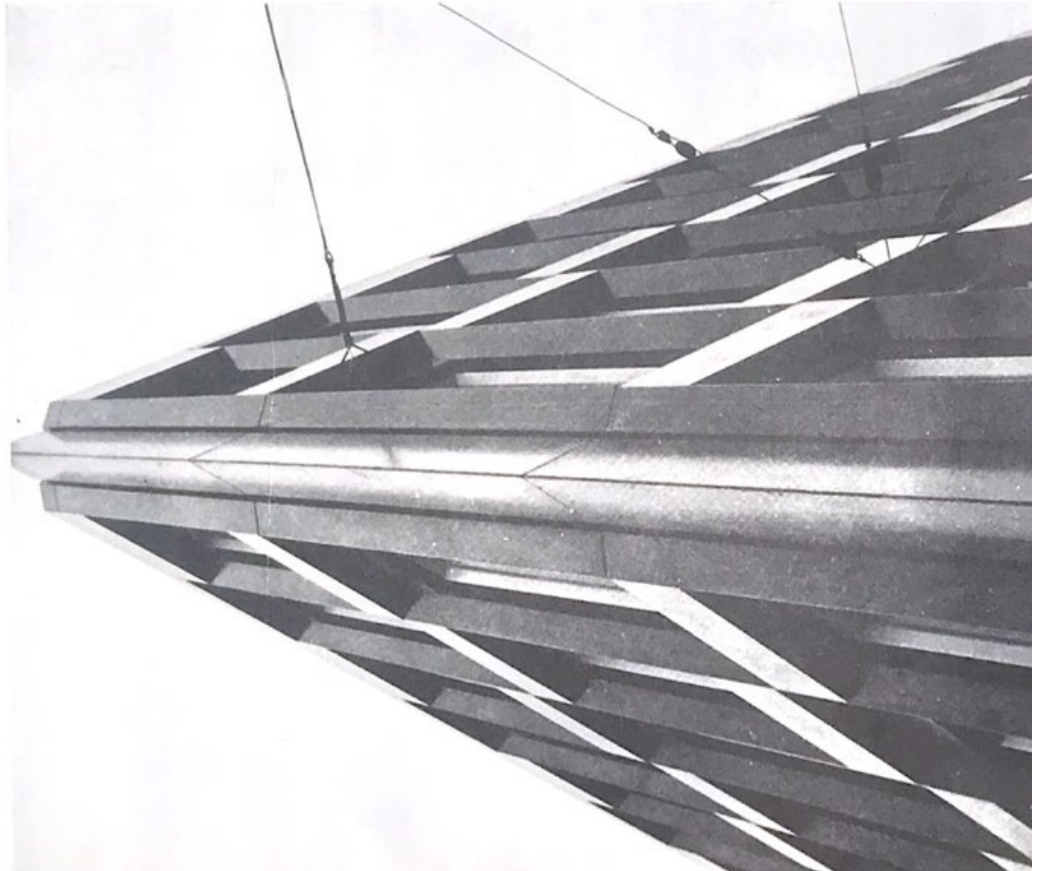


WALLS AND PARTITIONS

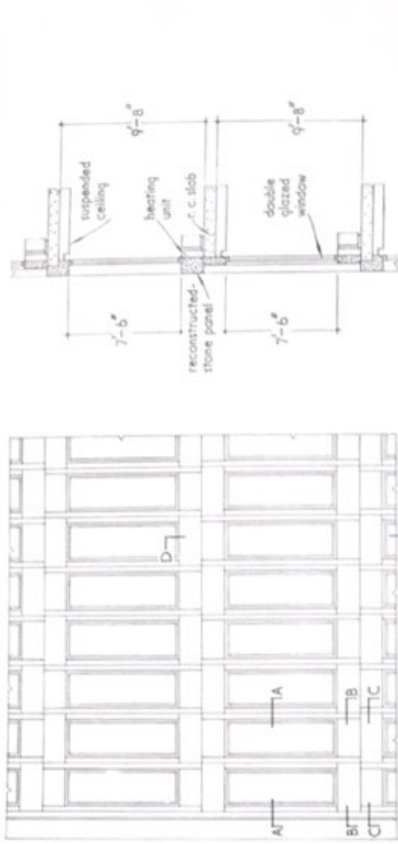
**EXTERNAL FAÇADE: EMBASSY IN OSLO, NORWAY**  
 DESIGNED BY EERO SAARINEN AND ASSOCIATES: JOHN ENGH  
 AND HENRIK KIAER (associate architects)

(Material supplied by J. C. Carlson)

The cladding is reconstructed stone. An effect of depth is given by playing the vertical members and by dividing the horizontal members into two roughly equal parts and presenting them in two different planes.

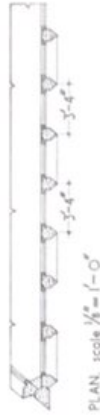


WALLS AND PARTITIONS

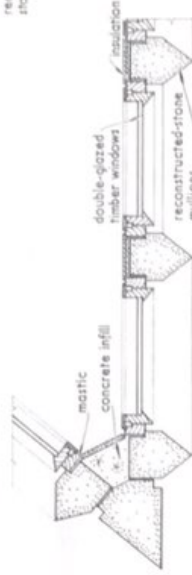


SECTION.

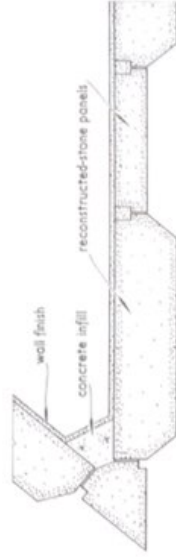
ELEVATION, scale  $\frac{1}{8}'' = 1'-0''$



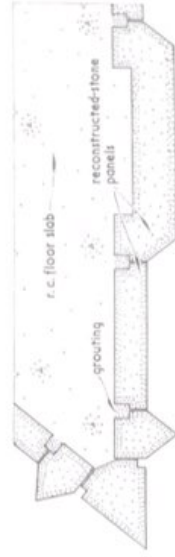
PLAN, scale  $\frac{1}{8}'' = 1'-0''$



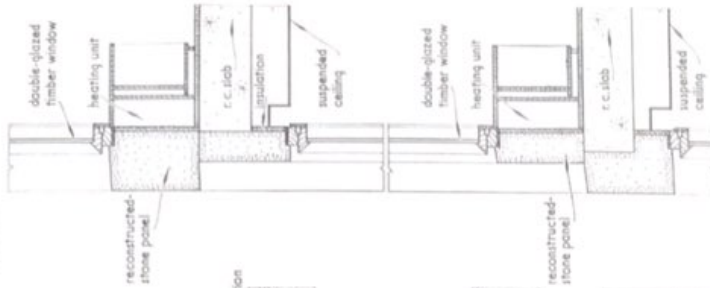
PLAN AT A-A, scale  $\frac{1}{2}'' = 1'-0''$



PLAN AT B-B, scale  $\frac{1}{2}'' = 1'-0''$



PLAN AT C-C, scale  $\frac{1}{2}'' = 1'-0''$



SECTION D-D, scale  $\frac{1}{2}'' = 1'-0''$

NOTE: figured dimensions in feet and inches are approximate